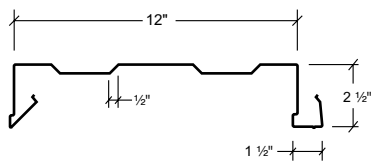
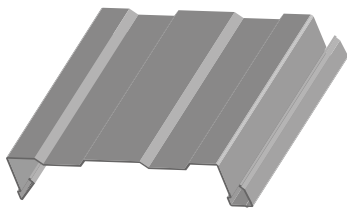


CONCEALED FASTENING SYSTEMS

NUWALL®

The NuWall® wall panel can be used for either new or retrofit construction. This concealed fastened system creates a clean, uninterrupted wall on a building.



Features and Benefits:

- The NuWall® system is based on a 12-inch module. This means that when using NuWall® over existing metal panels, the existing panel ribs must be 6 inches or 12 inches on center.

Product Specifications

- **Applications:** Wall
- **Coverage Widths:** 12"
- **Panel Attachment:** Concealed Fastening System
- **Gauges:** 24 (standard); 22 (optional)
- **Finishes:** Smooth (standard); Embossed (optional)
- **Coatings:** Galvalume Plus®, Signature® 200, Signature® 300, Signature® 300 Metallic

CATEGORY	CHARACTERISTIC	TEST METHOD	PURPOSE	RESULT
STRUCTURAL	Negative Wind Loads	ASTM E 1592	Provides a standard procedure to evaluate or confirm structural performance under uniform static air pressure difference	See Load Chart Section
	Positive Wind Load	ASTM E 1592	Provides a standard procedure to evaluate or confirm structural performance under uniform static air pressure difference	See Load Chart Section

www.mbc.com



HOUSTON, TX | 877.713.6224
ADEL, GA | 888.446.6224
ATLANTA, GA | 877.512.6224

ATWATER, CA | 800.829.9324
DALLAS, TX | 800.653.6224
INDIANAPOLIS, IN | 800.735.6224

LUBBOCK, TX | 800.758.6224
MEMPHIS, TN | 800.206.6224
OKLAHOMA CITY, OK | 800.597.6224

OMAHA, NE | 800.458.6224
PHOENIX, AZ | 888.533.6224
RICHMOND, VA | 800.729.6224

ROME, NY | 800.559.6224
SALT LAKE CITY, UT | 800.874.2404
SAN ANTONIO, TX | 800.598.6224

Descriptions and specifications contained herein were in effect at the time this publication was approved for printing. In a continuing effort to refine and improve products, MBCI reserves the right to discontinue products at any time or change specifications and/or designs without incurring obligation. To ensure you have the latest information available, please inquire or visit our website at www.mbc.com. Application details are for illustration purposes only and may not be appropriate for all environmental conditions, building designs or panel profiles. Projects should be designed to conform to applicable building codes, regulations and accepted industry practices. If there is a conflict between this manual and project erection drawings, the erection drawings will take precedence.